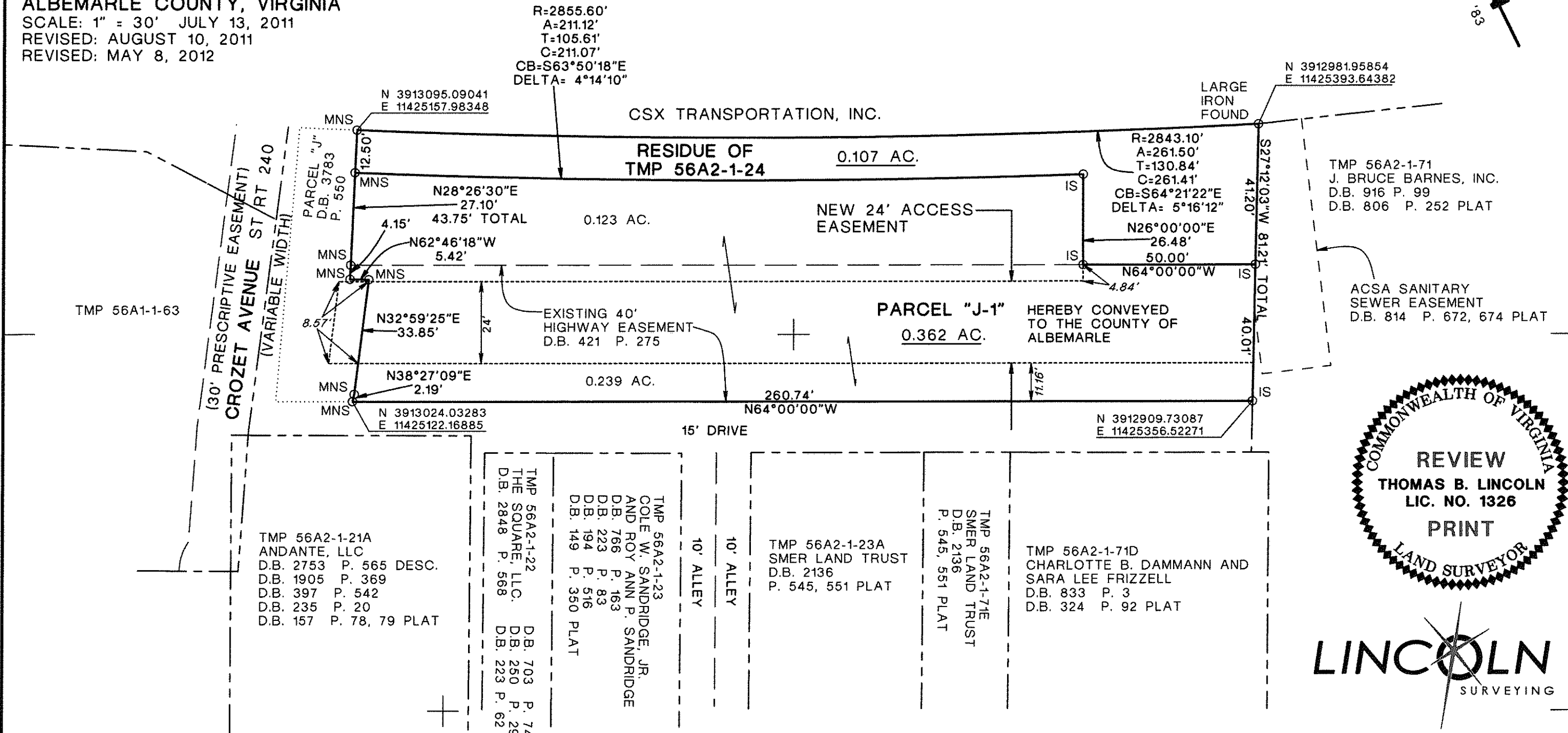
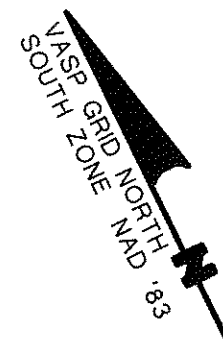


SUBDIVISION PLAT SHOWING
 PARCEL "J-1"--BEING A PORTION OF
 TAX MAP 56A2 PARCEL 1-24
 HEREBY CONVEYED TO
 THE COUNTY OF ALBEMARLE
 LOCATED ON CROZET AVENUE
 WHITE HALL DISTRICT
 ALBEMARLE COUNTY, VIRGINIA
 SCALE: 1" = 30' JULY 13, 2011
 REVISED: AUGUST 10, 2011
 REVISED: MAY 8, 2012

LEGEND:
 IS = IRON SET
 MNS = MAG NAIL SET



TMP 56A1-1-63

CSX TRANSPORTATION, INC.

RESIDUE OF
 TMP 56A2-1-24
 0.107 AC.

NEW 24' ACCESS
 EASEMENT

PARCEL "J-1"
 0.362 AC.
 HEREBY CONVEYED
 TO THE COUNTY OF
 ALBEMARLE

TMP 56A2-1-71
 J. BRUCE BARNES, INC.
 D.B. 916 P. 99
 D.B. 806 P. 252 PLAT

ACSA SANITARY
 SEWER EASEMENT
 D.B. 814 P. 672, 674 PLAT

(30' PRESCRIPTIVE EASEMENT)
 CROZET AVENUE ST/RT 240
 (VARIABLE WIDTH)

TMP 56A2-1-21A
 ANDANTE, LLC
 D.B. 2753 P. 565 DESC.
 D.B. 1905 P. 369
 D.B. 397 P. 542
 D.B. 235 P. 20
 D.B. 157 P. 78, 79 PLAT

TMP 56A2-1-22
 THE SQUARE, LLC.
 D.B. 2848 P. 568
 D.B. 703 P. 746
 D.B. 250 P. 299
 D.B. 223 P. 62 PLAT

TMP 56A2-1-23
 COLE W. SANDRIDGE, JR.
 AND ROY ANN P. SANDRIDGE
 D.B. 766 P. 163
 D.B. 223 P. 83
 D.B. 194 P. 516
 D.B. 149 P. 350 PLAT

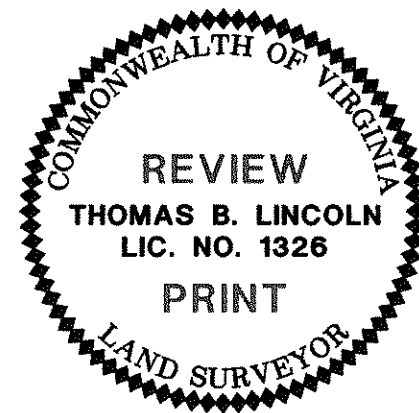
10' ALLEY
 10' ALLEY

TMP 56A2-1-23A
 SMER LAND TRUST
 D.B. 2136
 P. 545, 551 PLAT

TMP 56A2-1-71E
 SMER LAND TRUST
 D.B. 2136
 P. 545, 551 PLAT

TMP 56A2-1-71D
 CHARLOTTE B. DAMMANN AND
 SARA LEE FRIZZELL
 D.B. 833 P. 3
 D.B. 324 P. 92 PLAT

AREA TABULATION:
 0.469 AC.--EXISTING TMP 56A2-1-24
 -0.362 AC.--PARCEL "J-1"
 0.107 AC.--NEW TOTAL TMP 56A2-1-24



Innovation. Integrity. Vision.
 632 BERKMAR CIRCLE
 CHARLOTTESVILLE, VIRGINIA 22901
 OFFICE: 434-974-1417